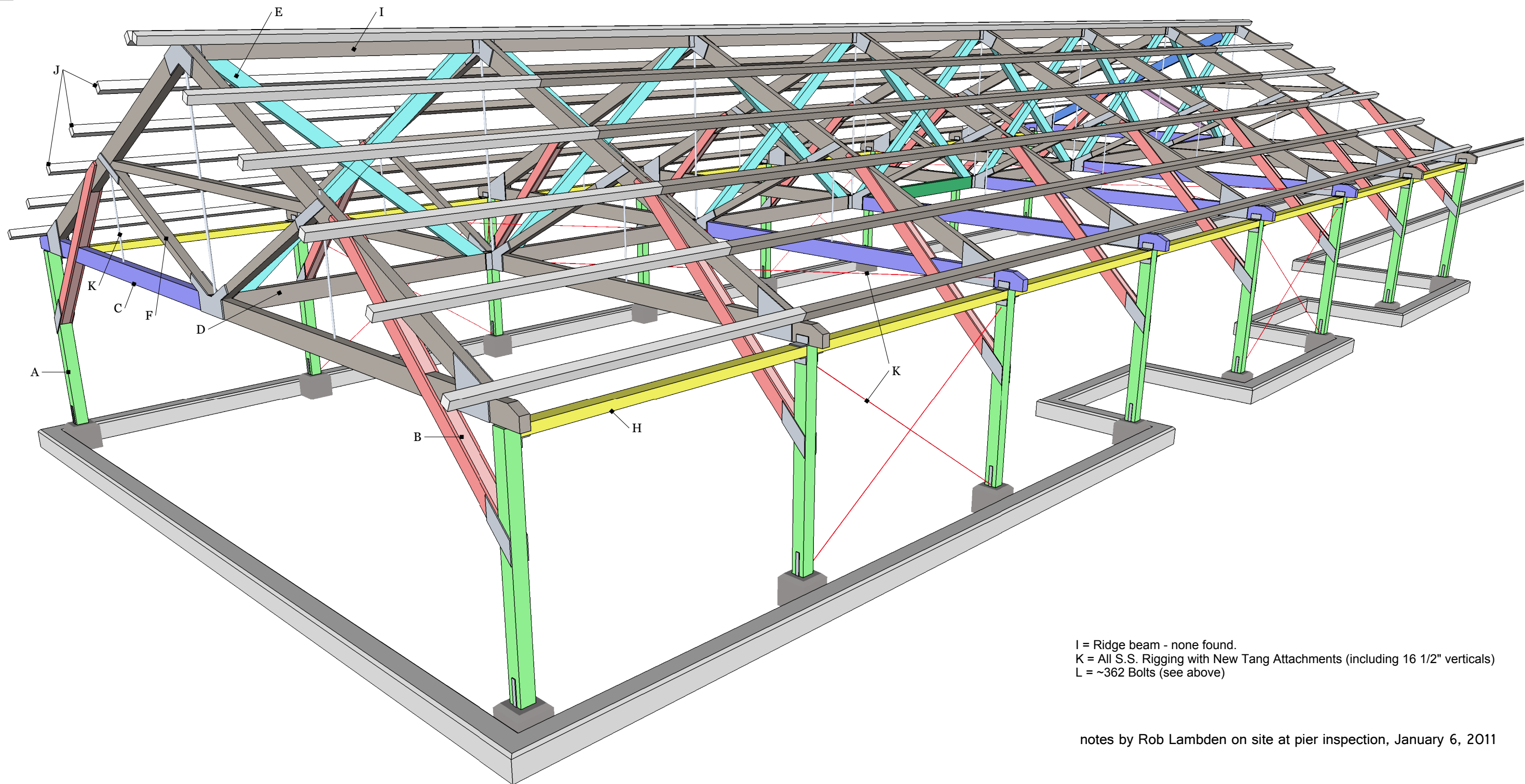
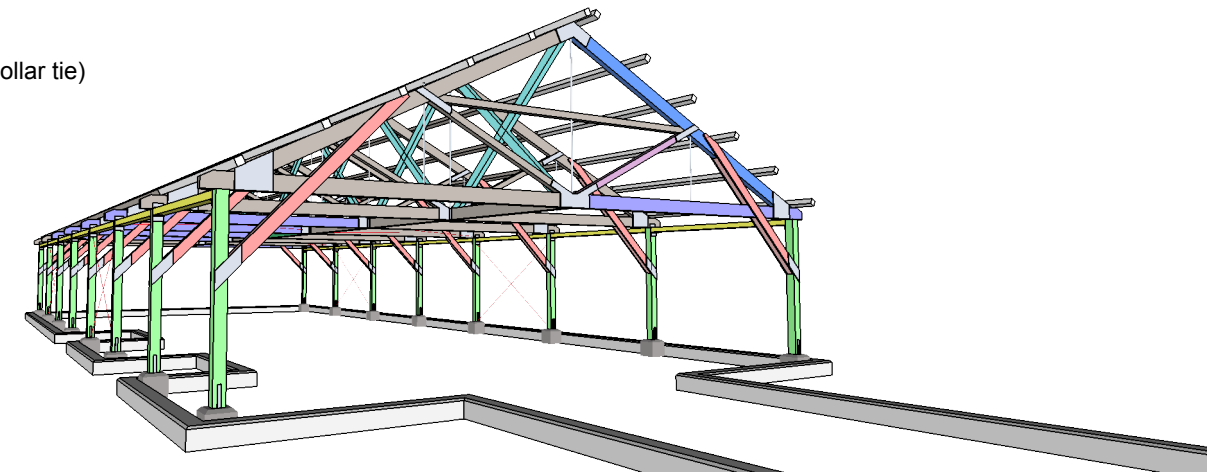


- A** = Hardwood Post - All New - 16 posts, 6" x 6" x 7', 8 bolts each; 128 bolts
- B** = Knee Braces, 1" x 6" and 4" x 6" filler - All New - 16 sets, 32 knee braces 4" x 6" x 49", 32 knee brace struts 1" x 6" x 10' (**NOTE #1:** Add 4" x 6" filler above collar tie)
- C** = Collar Ties (truss lower chord) - 3 (T1N, T3S, T5S) to 6 (T4S, T6S, T8N) identified for replacement, 4" x 8" x 16', 12 bolts each; 72 bolts
- D** = Longitudinal Ties - one identified for replacement (T4), between trusses #4 and #5, 4" x 8" x 10', 4 bolts each
- E** = X Braces - All New - 14 beams, 4" x 6" x 12', 4 bolts each; 56 bolts (**NOTE #2:** New X Brace configuration using 4" x 6" lap joint)
- F** = Truss Brace - one identified for replacement, truss #8N, 4" x 4" x 8', 6 bolts each
- G** = Truss (top chord) - one identified for replacement, truss #8N, 4" x 8" x 17', 12 bolts each
- H** = Post to Post Beam - All New - 14 beams, 4" x 6" x 10', 6 bolts each; 84 bolts
- J** = Purlins, replace peak rows and ends - 24 4" x 4" x 14', 10 4" x 4" x 10'



I = Ridge beam - none found.
 K = All S.S. Rigging with New Tang Attachments (including 16 1/2" verticals)
 L = ~362 Bolts (see above)

notes by Rob Lambden on site at pier inspection, January 6, 2011