

## 8 trusses (each)

2 posts, 6x6x7'  
2 post base brackets, 2 bolts each  
2 knee braces, 4x6x49"  
4 knee brace struts, 1x6x10'  
2 knee brace bracket **pair**, 4 bolts each  
2 bottom chord collar tie beams, 4x8x16'  
2 top chord truss beams, 4x8x17'  
2 chord bracket **pair**, 12 bolts each  
2 truss braces, 4x4x8'  
2 truss brace bracket **pair**, 4 bolts each  
1 1" vertical rods  
2 1/2" vertical rods

## 7 truss "connect packages" (each)

1 ridge beam, 4x8x10'  
1 bottom center beam, 4x8x10'  
2 X-braces, 2x6x12'  
2 post-to-post beams, 4x6x10'  
4 **pair** of post-to-post beam brackets, 16 bolts  
1 pair of middle top brackets, 16 bolts  
1 pair of middle bottom brackets, 20 bolts

## purlins (total)

4 x 4 x 73' 3/4" x 12 = 877'  
6 x 2 x 8 = 96 purlin brackets, bolts

## roofing (total)

2 x 18' 2 1/4" x 73' 3/4" = 2657.6 square feet

## lumber (total)

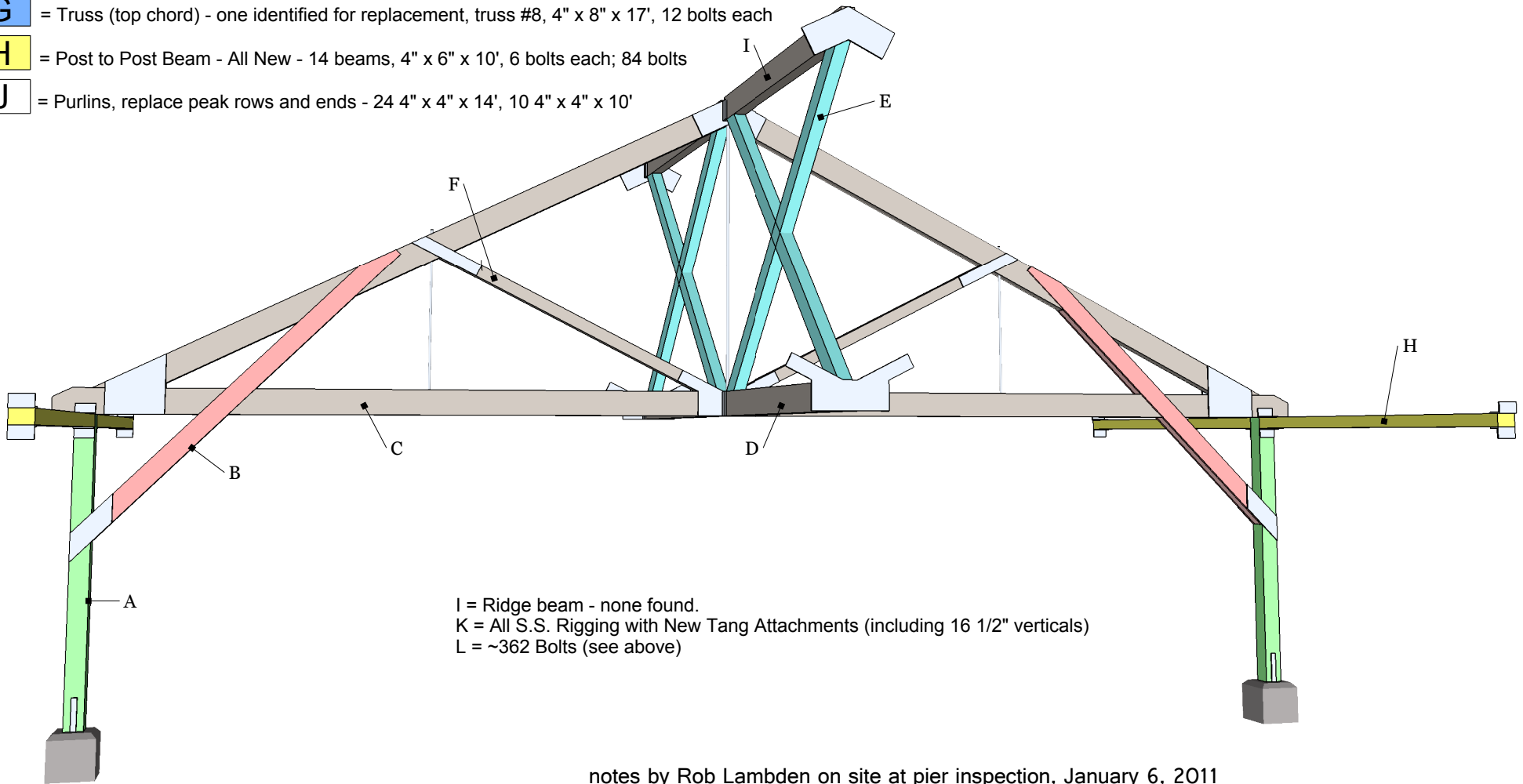
16 posts, 6x6x7'  
16 knee braces, 4x6x49"  
32 knee brace struts, 1x6x10'  
16 bottom chord collar tie beams, 4x8x16'  
16 top chord truss beams, 4x8x17'  
16 truss braces, 4x4x8'  
7 ridge beam, 4x8x10'  
7 bottom center beam, 4x8x10'  
14 X-braces, 2x6x12'  
14 post-to-post beams, 4x6x10'  
*(purlins listed separately)*

## hardware (total)

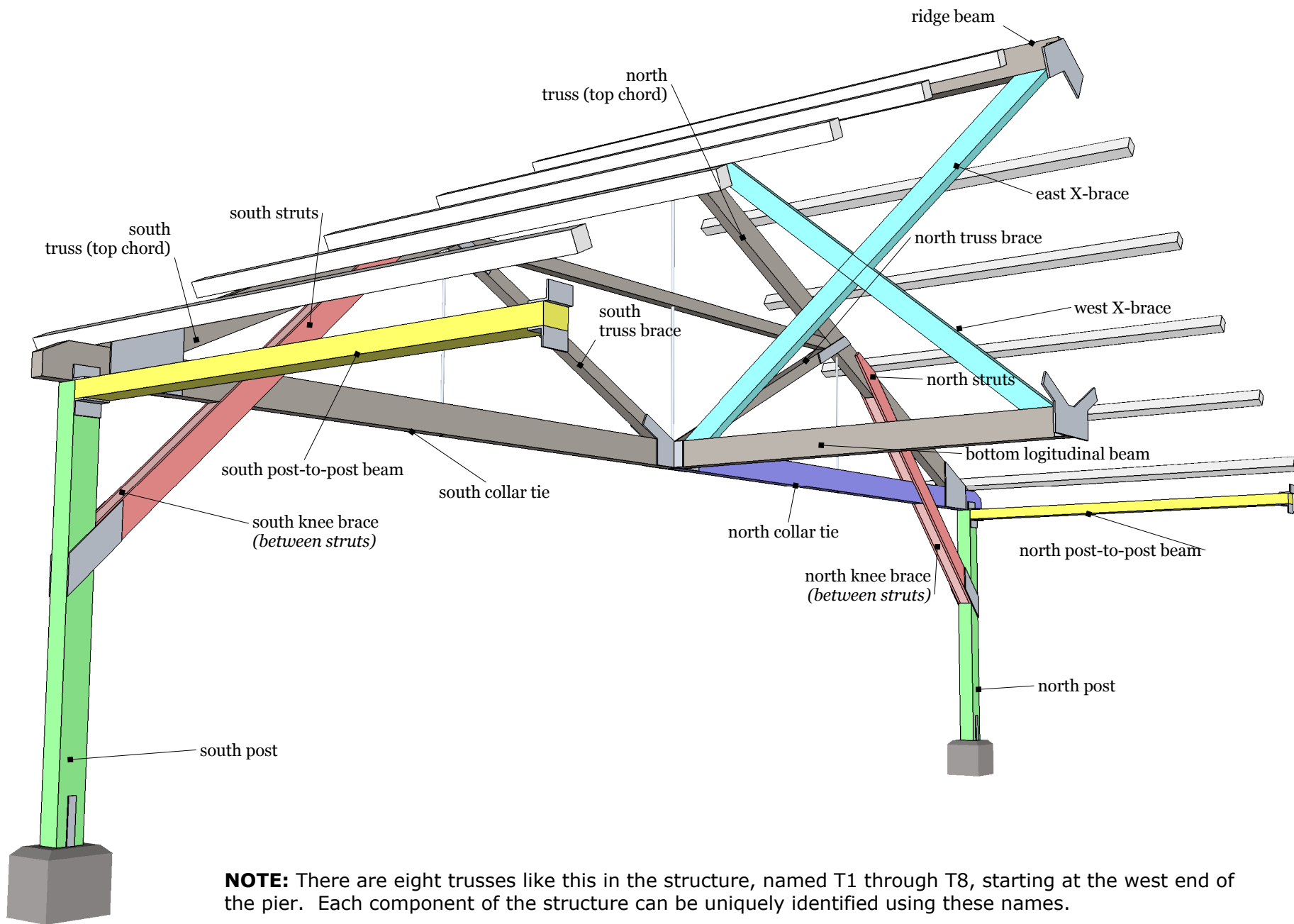
16 post base brackets, 32 bolts  
16 knee brace bracket **pair**, 64 bolts  
16 chord bracket **pair**, 192 bolts  
16 truss brace bracket **pair**, 64 bolts  
28 **pair** of post-to-post beam brackets, 112 bolts  
7 pair of middle top brackets, 112 bolts  
7 pair of middle bottom brackets, 140 bolts  
*(716 bolts total, purlins listed separately)*

8 1" vertical rods  
16 1/2" vertical rods

- A** = Hardwood Post - All New - 16 posts, 6" x 6" x 7', 8 bolts each; 128 bolts
- B** = Knee Braces, 1" x 6" and 4" x 6" filler - All New - 16 sets, 32 knee braces 4" x 6" x 49", 32 knee brace struts 1" x 6" x 10' (**NOTE #1:** Add 4" x 6" filler above collar tie)
- C** = Collar Ties (truss lower chord) - 3 to 6 identified for replacement, 4" x 8" x 16', 12 bolts each; 72 bolts
- D** = Longitudinal Ties - one identified for replacement, between trusses #4 and #5, 4" x 8" x 10', 4 bolts each
- E** = X Braces - All New - 14 beams, 4" x 6" x 12', 4 bolts each; 56 bolts (**NOTE #2:** New X Brace configuration using 4" x 6" lap joint)
- F** = Truss Brace - one identified for replacement, truss #8, 4" x 4" x 8', 6 bolts each
- G** = Truss (top chord) - one identified for replacement, truss #8, 4" x 8" x 17', 12 bolts each
- H** = Post to Post Beam - All New - 14 beams, 4" x 6" x 10', 6 bolts each; 84 bolts
- J** = Purlins, replace peak rows and ends - 24 4" x 4" x 14', 10 4" x 4" x 10'



notes by Rob Lambden on site at pier inspection, January 6, 2011



single truss

## Hanalei Pier Repair Project

Rotary Club of Hanalei Bay  
Hanalei, Kauai, Hawaii

Jan 12, 2011

wingo.com  
web site design

by Joseph Oster  
www.wingo.com/SketchUp  
808-826-5316